



en

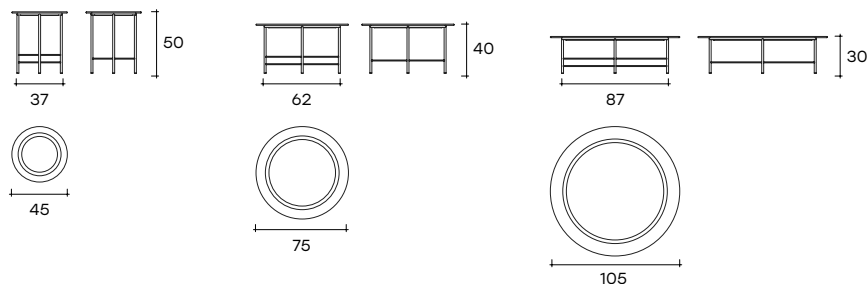
DESIGN
SETSU & SHINOBU ITO

modello registrato
registered model

Tavolino tondo
con piano in vetro
da 10 mm fuso a gran
fuoco, retroverniciato
con tinte metallizzate.
Base in metallo, finitura
Nichel Nero Lucido.

Round coffee table
with top in 10 mm fused
glass, back-lacquered
with metallic paints.
Metal base,
Black Glossy Nickel finish.

portata sul piano: 30 kg
load capacity on top: 30 kg



dimensioni L, P, H
dimensions L, W, H
(cm)

COD./CODE

ø

P/W

H

peso netto
net weight
(kg)

peso lordo
gross weight
(kg)

volume imballo
package volume
(m³)

Tavolino tondo con piano in vetro
fuso retroverniciato con tinte
metallizzate Cat.2.

EN45/VF-...

45

50

6

14

0,12

Round coffee table with fused
glass top, back-painted
with metallic paints Cat.2.

EN75/VF-...

75

40

14

26

0,25

EN105/VF-...

105

30

25

44

0,39

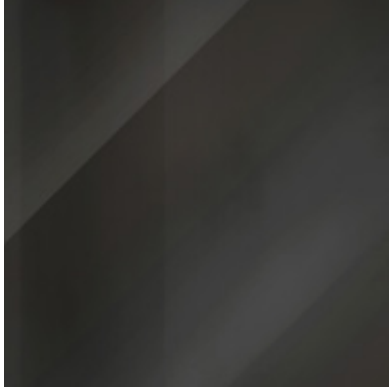
VETRO RETROVERNICIATO _ BACK PAINTED GLASS

CAT. COLORE COLOR CAT.	COLORI COLORS	
		Vetro trasparente fuso Fused transparent glass
CAT.2 Tinta metallizzata Metallic color	Marrone brillante Brilliant Brown	VF-MB
	Nero brillante Brilliant Black	VF-NB

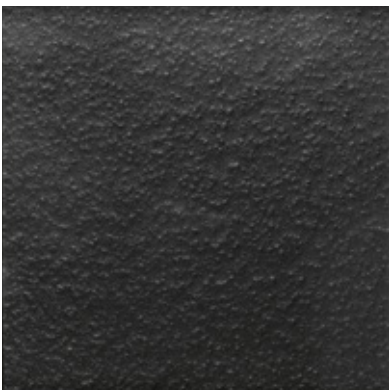
En è disponibile anche nelle altre finiture di Cat.2 per vetro fuso.
En is also available in the other finishes of fused glass Cat.2.



FINITURE
FINISHES

Base in metallo
Metal base

nichel nero lucido
black glossy nickel

Piano in DV-Glass
DV-Glass top

nero brillante
brilliant black



marrone brillante
brilliant brown